

Deltek
INSIGHT
2014

Understanding the Accounting Side of Material Management

**Presented By: Debbie Waggoner, GCS Premier Sr. Systems
Consultant, WJ Technologies, LLC**

OPTIMIZE
YOUR POTENTIAL

Session Overview

Understanding what types of transactions affect the General Ledger is the first step in effective material management

OPTIMIZE
YOUR POTENTIAL

Product Definition

- Do any applications In Product Definition impact the G/L?
 - No
 - Product Definition, specifically the Part Master File, can be used in the Requisition and Purchasing modules
 - The Part Master File is required if the Inventory and Bills of Materials modules are used
 - The Part Master File is optional in the Sales Order Entry module



Requisitions

- Do Requisitions have any GL impact?
 - No.
 - Requisitions update the Inventory Master File with Quantity on Requisition

The screenshot shows the 'Inventory Master File - Insight' window with the following data:

Inventory Account	0140	000	RAW MATERIALS
Account Type	1		Company Owned Raw Material, Purchased Parts
Part	ELE-PWR-0001	Revision	Power Cable
Unit of Measure	EA		
Location	- -		
Quantity On Hand	0	Last Unit Cost	0.0000
Quantity Reserved	0	Average Unit Cost	0.0000
Quantity On Order	5	Standard Unit Cost	0.0000
Quantity On Requisition	1	Counting Cycle	
Safety Stock	0	Pre-Count Quantity	0
Max Stock Desired	0	Actual Count	0
YTD Usage	0	Last Physical Count	10/27/2014
Last Year Usage	0	Last Activity	10/27/2014
Part Balance	0.00	Last Transaction	

Tracking options on the right:

- Location (PMF)
- Lot (PMF)
- Serial (PMF)

A 'Browse' button is located at the bottom right of the window.



Requisitions

- The Requisition module does have a Requisition Commitments report. However, that report is unrelated to the Purchasing Commitments which will appear on the JSR.
- The Requisition Commitment report is used to show the requisitions that have not been generated to a PO

```

REPORT DATE: 10/27/14 09:07                                DELTEK, INC.                                PAGE 0001
                PURCHASE REQUISITION COMMITMENTS DETAIL REPORT

SELECTED COMMITMENTS THROUGH: 10/27/14
APPROVAL REQUIRED: INITIAL
SELECTED ACCOUNTS: ALL
=====
ACCOUNT NO: 1000-003-46      ACCOUNT NAME: ADI (SMART CARD)
TRANS CODE: 00
=====
REQUISITION NO: WEBINAR      REQUISITION DATE: 12/10/13      EMPLOYEE: GRAMMER, TIM                                PROCESS WORKSHEET: Y
=====
ITEM  REQUIRED  PART NUMBER/      REV  COST  VENDOR  VENDOR NAME                                QUANTITY  U/M      UNIT COST      TOTAL COST
NO    DATE    DESCRIPTION                                TYPE
-----
001.  12/18/13  ELE-TV-0002                                OPEN      10.00  EA      2,200.0000      22,000.00
      TV 46" Flat Screen

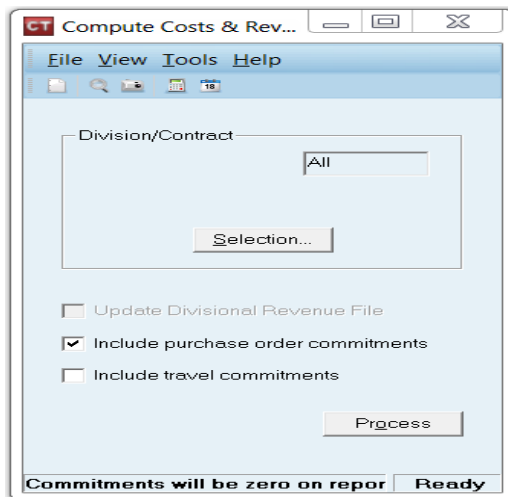
                                                    REQUISITION TOTAL:                                22,000.00
                                                    TRANSACTION TOTAL:                                22,000.00
                                                    ACCOUNT TOTAL:                                    22,000.00
=====
REPORT TOTAL:                                    22,000.00

```

Purchasing

What effect does entering a purchase order have?

- Commitments
 - Automatically updates the Purchasing Commitments report.
 - JSR is not updated until Compute Cost & Revenue is run with flag checked to include purchase order commitments – No G/L impact





Purchasing

What effect does entering a purchase order have?

- On Order quantities for Inventory

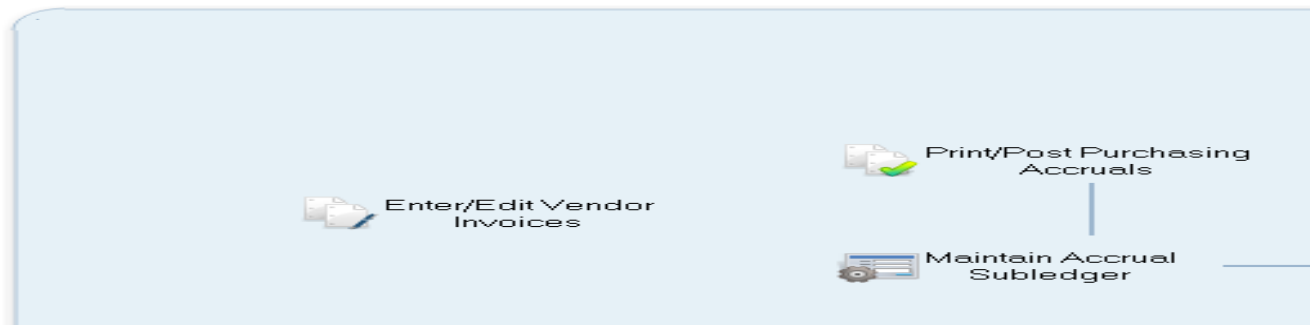
INVENTORY ACCT: 0140-000 RAW MATERIALS

PART NUMBER	REV	DESCRIPTION	U/M	ON HAND	QTY RESERVD	NET AVAIL	AVERAGE COST	ORDER NUMBER	VENDOR I.D.	DUE DATE	ON ORDER
BOM-COMP1-0001		Computer Build Opt 1	EA	0	0	0	0.0000	123456	000023	00/00/00	10
								13-0001	000023	10/11/13	10
								13-0002	000008	10/02/13	5
								13-0005	000012	10/21/13	10
								13-0006	000018	10/10/10	10
								555555	000012	00/00/00	10

TOTAL:											55

PO Receipts

- Creates Stocking eligibility for Inventory(acceptance)
- Creates eligibility for Purchasing Accruals
 - Accruals update the G/L once Print/Post Purchasing Accruals is executed



- Vendor ID and unit cost from PO are locked on the Receipt
- Changes to PO will not be reflected on existing receipt records

Vendor Invoice/AP Voucher Creation

- Voucher Creation moves vendor invoices to AP module
 - Updates PO Summary Report with voucher number
 - Does NOT post to the General Ledger

PO Voucher Creation and Report - Insight

File View Tools Help

This application can first print out the Vendor Invoice File. After printing, you should take the opportunity to review this listing before creating the A/P vouchers.

Starting Voucher

Entry ID

Print Create

Default is last voucher added to the system + 1. Ready



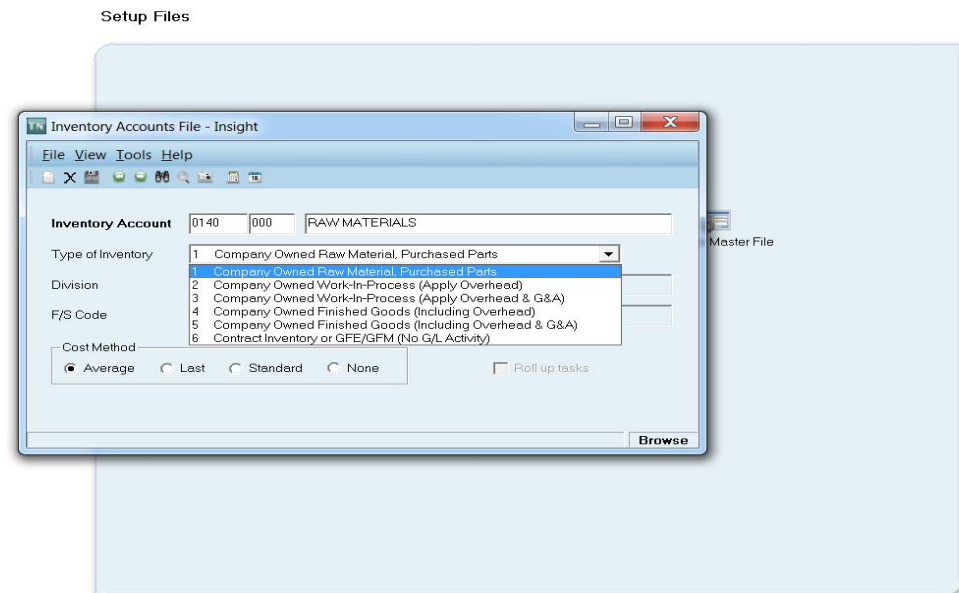
Vendor Invoice/AP Voucher Creation

- Post AP Voucher Distribution
 - Reverses accruals
 - Clears Commitments
 - Posts PO costs to GL
 - Updates Labor Summary File for Subcontractor hours/labor categories

- Changes to vouchers in AP will not update PO
 - Manual updates to Purchasing must be done if AP Voucher is changed
 - Change Vouchered Receipts
 - Change Vouchered Debit Memos

Inventory

- Inventory Types Include:
 - Type 1 – Balance sheet/Asset account
 - Type 4 – WIP Contract
 - Type 6 – Contract





Inventory

- Inventory Account Issues
- Which type of issues post to the General Ledger?

Issue From (Inv Account)		Issue To (Accounts to Charge)	
Account Type	Description	Account Type	Description
1	Raw Materials	1	Raw Materials
1	Raw Materials	6	Contract
1	Raw Materials	-	Any G/ L account other than "B," "L," "O"
4	Finished Goods w/ O/H	4	Finished Goods
4	Finished Goods w/ O/H	6	Contract
4	Finished Goods w/ O/H	-	Any G/ L account other than "B," "L," "O"
6	Contract	6	Contract (if both accounts have the same four-digit job number)



Inventory

- Transfers
- Which type of Transfers post?
 - All transfer types post to the G/L

Transfer From

Account Type	Description
1	Raw Materials
1	Raw Materials
4	Finished Goods w/ O/H
4	Finished Goods w/ O/H
6	Contract
6	Contract
6	Contract

Transfer To

Account Type	Description
1	Raw Materials
6	Contract
4	Finished Goods w/ O/H
6	Contract
1	Raw Materials
4	Finished Goods w
6	Contract

Inventory

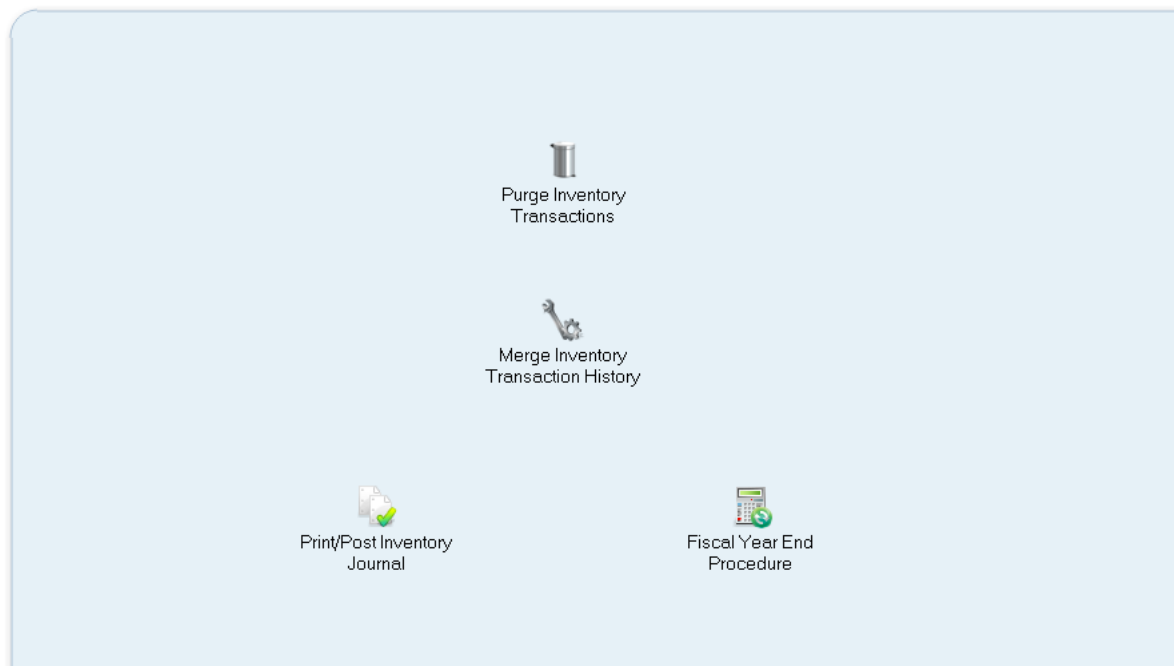
- Adjustments
- Which type of adjustments post?
 - All adjustments post but some may not change the G/L Balance

Inventory

- Posting Inventory Journal

- Inventory Control>Utilities/Processes>Print/Post Inventory Journal

Utilities/Processes





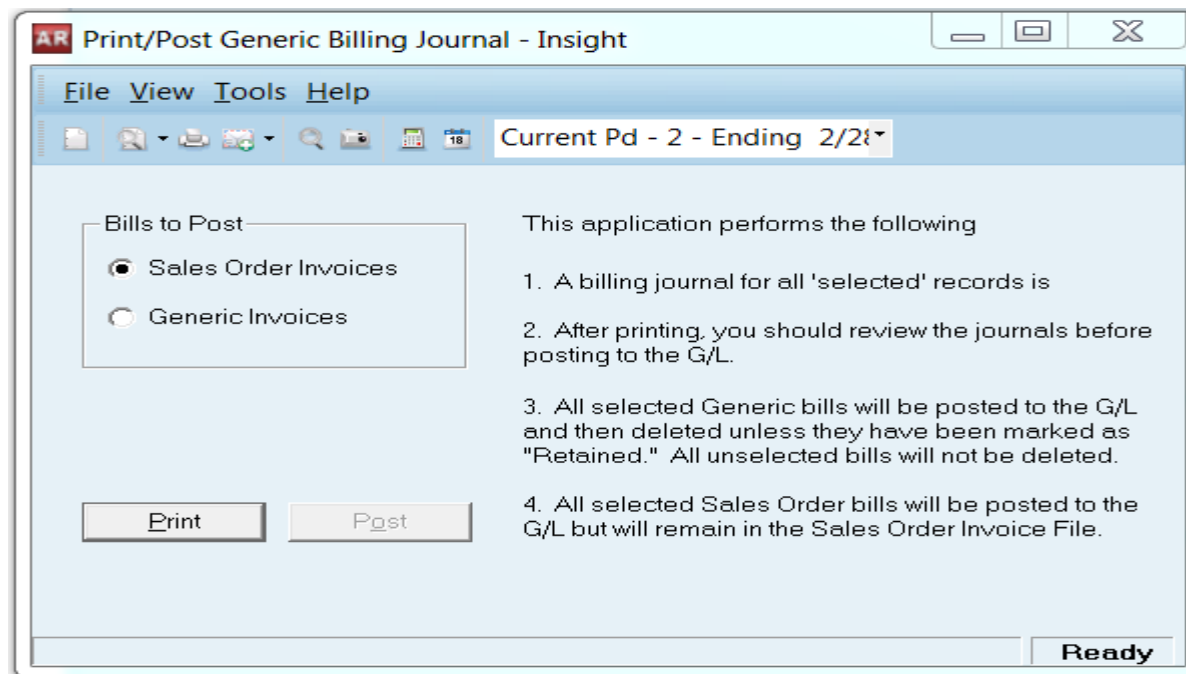
Inventory

- Posting Types
 - ISS
 - XFR
 - ADJ

- Fiscal Year End Procedure
 - No G/L activity, but has to be done before the G/L is closed
 - Resets YTD Usage Field in Inventory Master File

Order Entry

- There are 2 transactions in the Order Entry module that eventually post to the GL
 - Enter/Edit Issues to Sales Orders
 - Posted to GL when the Inventory Journal is posted
 - Generate Invoices from Sales Orders/Shipments
 - Posted to GL in AR module Print/Post Generic Billing Journal





Conclusion

- The only Material Management applications that directly affect the GL are:
 - Print/Post Purchasing Accruals
 - Print/Post Inventory Journal

Deltek
INSIGHT
2014

Questions?

OPTIMIZE
YOUR POTENTIAL



Contact Us

For more information feel free to call or email us or visit us at **Booth 16:**

Debbie Waggoner, GCS Premier Sr. System Consultant

- debbie.waggoner@wjtechnologies.com
- 703-885-8157

Karen Louis, Managing Member

- karen.louis@wjtechnologies.com
- 703-885-8158

GovCon360.com

WiJiT | wj.technologies,llc

13665 Dulles Technology Drive
Herndon, VA 20171

www.WJTechnologies.com